



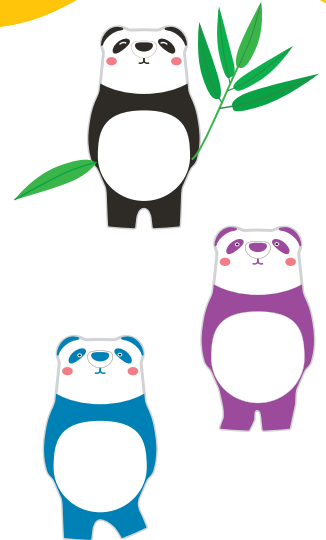
Children Finger Type Pulse Oximeter

Oxy Panda

Model No. AE-C9



Black Panda



Blue Panda



Pink Panda

Oxy Panda is a unique designed Finger Type Pulse Oximeter specially for children.

The cute panda design attracts children for SpO₂ measurement simple and easy. Panda can check children's heart rate and blood-oxygen saturation levels accurately and quickly. There are 6 display modes for convenient values reading. It's a suitable SpO₂ diagnostic device for clinic and homecare.



Features

- ★ Easy and simple operation
- ★ Display SpO₂, PR, Pleth bar, Pleth waveform
- ★ Low power consumption; automatically power off
- ★ Six display modes; adjustable brightness
- ★ Battery-low indicator
- ★ Suitable for use in family or hospital

Technical Specification

Patient Range

Adult and Pediatrics patients

Display

Type	Dual color OLED display 6 display modes
Parameters	SpO ₂ , PR, Pleth bar, Pleth waveform
Brightness	Adjustable 10 levels
Alarm	Battery-low indicator

Oxygen Saturation (SpO₂)

Range	70% - 99%
Resolution	1%
Accuracy	70% - 99%: ± 3% 0% - 69%: no definition

Pulse Rate (PR)

Range	30 - 235 bpm
Resolution	1 bpm
Accuracy	30-99: ± 2 bpm, 100- 235: ±2%

Mechanical

Dimension	50(L) x 28(W) x 28(H) mm ³
Weight	25g (without batteries)

Environmental

Operating Temperature	5°C-40°C
Storage Temperature	-20°C-55°C
Operating Humidity	RH≤80%, no condensation
Storage Humidity	RH≤93%, no condensation

Battery

Two AAA 1.5V, 600mAh alkaline batteries could be continuously operated as long as 30 hours.

Interference Resistance Capacity against Ambient Light

Device works normally when mixed noise produced by BIO-TEK INDEX Pulse Oximeter tester.



ISO 13485:2003



Acare Technology Co., Ltd.

6F-6, No.5, Wuquan 1st Rd., Xinzhuang Dist., New Taipei City 242, Taiwan

Tel: +886-2-2298-8170

Fax: +886-2-2298-8560

Email: info@acaretech.com

www.acaretech.com