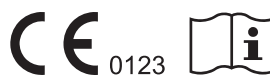


VTRUST 701DH

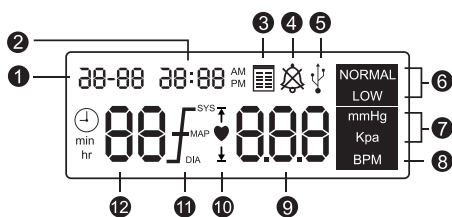
Handheld Non-Invasive Blood Pressure (NIBP) Monitor



Quick Start Guide

Monitor Front View Key	Function	Monitor Front View Key	Function
1 SYS	Systolic pressure measurement	8	LCD display
2 MAP	Mean arterial pressure measurement	9 DIA	Diastolic pressure measurement
3	<ul style="list-style-type: none"> Red light : Indicates when approximately one hundred NIBP measurements remain. If battery power falls below a level consistent with reliable operation, the device will automatically turn off. The battery must then be recharged. Orange light : Connecting the battery charger with the device and the batteries are charging. Green light : The batteries are fully charged. 	10 BPM	Heart Rate measurement
4	<ul style="list-style-type: none"> Press briefly to turn power on. Press and hold for 3 seconds to turn power off. 	11	<ul style="list-style-type: none"> NIBP measurement start key. Press the key again to cancel a NIBP measurement. Press and hold the key for 3 secs the monitor in STAT mode.
5	Press this key for silence.	12	Press this key to scroll up through sub selections.
6	Press this key momentarily to activate the NIBP cycle time menu. Press key again, a second time, to step through cycle time selections.	13	Press this key to setup the functions or parameters.
7	Press this key to review stored data.	14	Press this key to scroll down through sub selections.

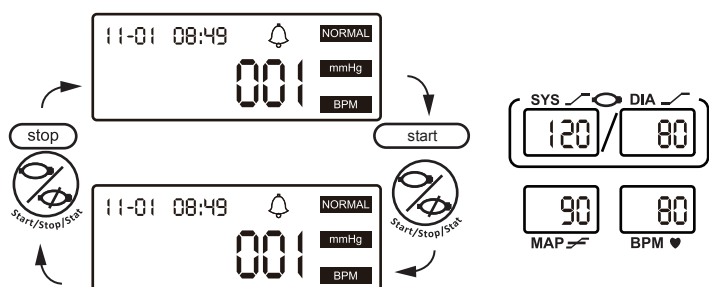
LCD Drawing



- 1 Date
- 2 Time
- 3 Review Data
- 4 Warning Silence
- 5 USB Connecting
- 6 Measurement Mode
- 7 BP Unit
- 8 Pulse Rate Unit
- 9 Measure/Memory Sequence
- 10 Pulse Rate Symbol
- 11 Warning Limit Range
- 12 Cycle Time

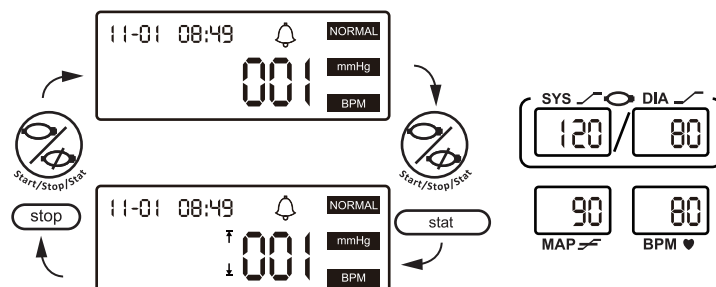
Measurement Mode

Press the “Start/Stop/Stat” button to start a measurement. The monitor might take second measurement when detect an unexpected motion signal during the first measurement period.



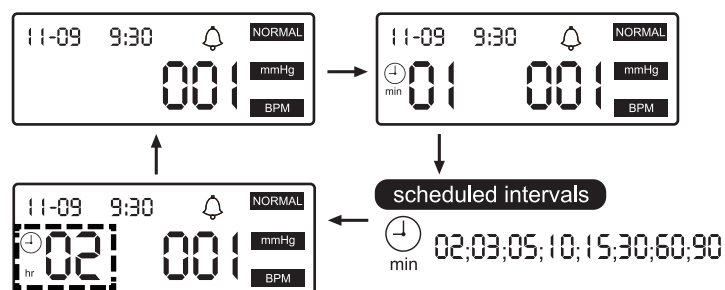
Stat Measurement Mode

Press the “Start/Stop/Stat” button for 3 seconds to activate the “Stat” measurement mode. VTRUST 701DH will continue measure the blood pressure within 5 minutes during “Stat measurement mode”.



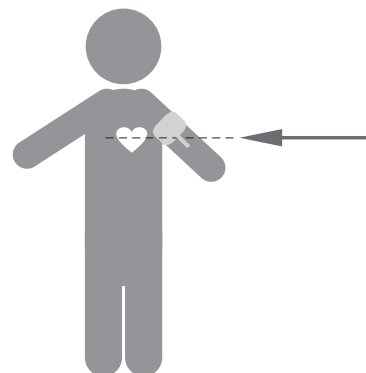
Cycle Time Function

Press the "Cycle time" function button to select the desired measurement period. And press the "Start/Stop/Stat" button to start the cycle time measurements.



Recommend Cuff Site

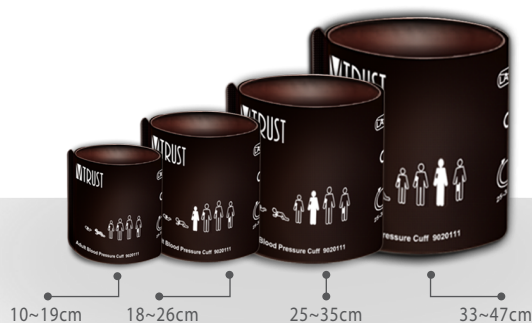
For measurement accuracy, the patient should keep the cuffed part of the arm at the same level as the heart. NIBP measurement points above the level of the heart gives reduced pressure values. Measurement points below the heart level gives increased values. These errors are due to the weight of the blood.



Cuff Size Selection

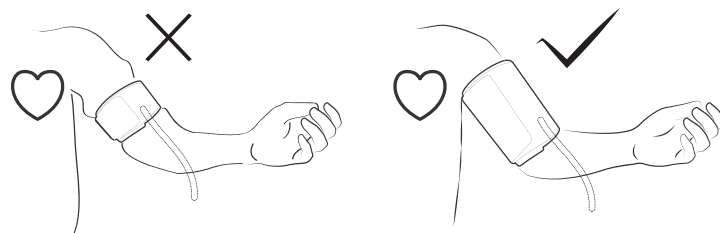
Cuff Size

- ◎ Infant blood pressure cuff (10-19cm)
- ◎ Small adult blood pressure cuff (18-26cm)
- ※ Adult blood pressure cuff (25-35cm)
- ◎ Adult extra long blood pressure cuff (25-35cm)
- ◎ Large adult blood pressure cuff (33-47cm)



VTRUST 701DH Provides 5 sizes of cuffs. In order to get the correct blood pressure reading, It is very important to select the appropriate cuff.(※ Standard Accessory).

The cuff shown below on the left is too small for the arm, therefore, full cuff pressure is never applied to the artery. This causes an erroneously high blood pressure reading. The cuff shown on the right is of adequate width for the arm, and full cuff pressure is applied to the brachial artery.



Cuffs for thighs are available for large patients or those where neither arm is available for cuff placement. Blood pressure measured at the thigh is typically 20-30 mmHg higher (when the patient is standing, not prone) than blood pressure measured at the upper arm.

Wrap Cuff Correctly

The end of the cuff (marked by an index line) should fall inside the range marked clearly on the inside of the cuff. If not, use a different size cuff. If the cuff is in the upper limit of the cuff range, the next larger size cuff can be used to ensure accurate measurements.

