

A412DA303
08/2015

Manufactured by
All Medicus Co., Ltd.

#7102~7107, #7402, #7403, #7406, 140,
Beolmal-ro, Dongan-gu, Anyang-si,
Gyeonggi-do 431-804 REPUBLIC OF KOREA
www.allmedicus.com

CE 0123

EU Representative
MT Promedt Consulting GmbH
Altenhofstr. 80, D-66386 St. Ingbert, Germany
Tel.: +49 6894 - 58 10 20

BLOOD
GLUCOSE
MONITORING
SYSTEM



Glucodr. *Plus+*TM

Blood Glucose Monitoring System

User Manual

AGM-3000



*TEST SUMMARY

This summary is intended only as a quick reference and is not a substitute for GlucoDr Plus Blood Glucose Monitoring System User Manual. Please read the entire this User Manual before you begin testing.



1

Check the code number. Press the power button to turn on the meter. Check the code number. The code number displayed on the meter must match the one on the test strip vial.



2

Insert a test strip. The meter will automatically turn on.



3

Apply the blood drop to the side edge of the yellow window of the test strip.



4

Wait for the blood drop to completely fill the yellow window of the test strip, then the meter will begin the countdown.



5

The blood glucose result will be displayed on the meter in just 5 seconds.

“Thank you for using **GlucoDr. Plus⁺**
Blood Glucose Monitoring System”

This User Manual will tell you all you need to know
about the system and how it works.

Please read this carefully before using the meter.

*PRECAUTIONS



Intended Use

For Self-testing: GlucoDr Plus Blood Glucose Monitoring System is for quantitative blood glucose testing in fresh capillary whole blood drawn from the fingertips, palm, arm, thigh, and calf. The GlucoDr Plus Blood Glucose Monitoring System is for testing outside the body (*in vitro* diagnostic use). The GlucoDr Plus Blood Glucose Monitoring System is intended for use by diabetic lay users for self testing to improve management of their blood glucose level. The GlucoDr Plus Blood Glucose Monitoring System should not be used for the diagnosis of or screening of diabetes mellitus, or for neonatal use.

For professional use: GlucoDr Plus Blood Glucose Monitoring System is for quantitative blood glucose testing in venous, arterial whole blood and fresh capillary whole blood drawn from the fingertips, palm, arm, thigh, and calf. The GlucoDr Plus Blood Glucose Monitoring System is for testing outside the body (*in vitro* diagnostic use). The GlucoDr Plus Blood Glucose Monitoring System is intended for use by healthcare professionals to improve management of patient's blood glucose level. The GlucoDr Plus Blood Glucose Monitoring System should not be used for the diagnosis of or screening of diabetes mellitus, or for neonatal use.



Test Principle

The blood sample is drawn into the test strip's reaction chamber through capillary action. Glucose in the sample reacts with glucose dehydrogenase and mediator in the test strip. This reaction creates electrical currents. The electrical currents produced are proportional to the glucose concentration in the blood and converted to the equivalent glucose concentration values calculated based on the algorithm programmed in GlucoDr Plus Meter.



Precautions for Use

- The GlucoDr Plus Meter is designed for use with GlucoDr Plus Test Strips (manufactured by **All Medicus Co., Ltd.**) only.
- The GlucoDr Plus Blood Glucose Monitoring System is calibrated to produce values equivalent to results on plasma specimens obtained from a laboratory analyzer (YSI 2300 STAT Plus).
- The GlucoDr Plus Blood Glucose Monitoring System should not be used for the diagnosis of diabetes.

- Rapid change in temperature may cause inaccurate test results in reading. When taking the meter from cold to warm area or from warm to cold area, let the meter sit for about 30 minutes to adjust to the room temperature.
- Do not drop the meter.
- Do not disassemble, repair or remodel without consultation. The sensitive parts could be damaged and the warranty will then become invalid.
- A hematocrit that is either very high (above 60%) or very low (below 20%) can cause false test results.



Precautions for Test Strip

- Store test strip vials in dry place with temperature ranging between 1~32°C (34~90°F).
- Avoid direct sunlight, heat and excessive humidity.
- Always close the vial cap immediately after removing a test strip from the vial. If the test strip vial is left open for a long time, the test strips will become unusable.
- Use the test strip immediately after removing it from the vial.
- Use all the test strips within 4 months after the first opening.
- Store your test strips only in their original vial and do not transfer them to a new bottle or any other container.
- Do not handle the test strip with wet hands.
- Do not use the test strip after the expiration date printed on the vial.
- Do not bend, cut, or alter the test strips.
- Do not insert the same test strip into the test port multiple times. It can lead to an improper operation.

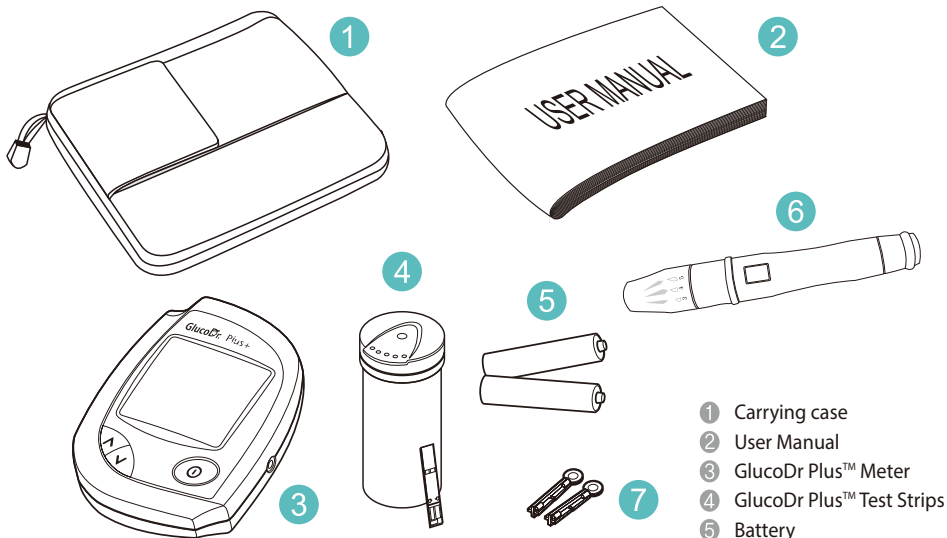


Safekeeping

- Store the GlucoDr Plus Meter at a temperature between 0~40°C (32~104°F).
- Store the GlucoDr Plus Meter at a place where relative humidity is less than 85%.
- Keep the GlucoDr Plus Meter in sanitary environment.
- Keep the meter away from direct sunlight.
- Keep the test port away from dirt, blood or water.
- Do not store your meter and test strips in the car, the bathroom, or the refrigerator. (sensitive to temperature and humidity)
- Keep the meter, test strip vials and lancing materials away from children.
- Clean the outside of the meter using a moist (not wet) cloth or tissue with isopropyl alcohol or mild detergent with water. Do not immerse the meter in water or other liquid.

Table of Contents

• Getting Started	GlucoDr Plus™ Blood Glucose Monitoring System 01 GlucoDr Plus™ Meter 02 GlucoDr Plus™ Meter LCD Display 04 GlucoDr Plus™ Test Strip 05
• Before Testing	Checking the Code Number 06 Checking Your System with GlucoDr Plus™ Control Solution 09 Preparing the Lancing Device 14
• Performing the Blood Glucose Test with GlucoDr Plus™	17
• Using the Meter Memory Function	Entering the EVENT RECORD MODE 21 Understanding Your Test Results 23 Recalling the Previous Test Results 24
• Setting the Meter	26
• Caring for GlucoDr Plus™ Meter	Installing Battery 31
• Additional Information	Display Message Guide 33 Troubleshooting Guide 38 Specifications 39 Performance Characteristics 40 Explanation of Symbols 41



Upon request of distributor, actual package may consist of all or part of items described above.

- 1 Carrying case
- 2 User Manual
- 3 GlucoDr Plus™ Meter
- 4 GlucoDr Plus™ Test Strips
- 5 Battery
- 6 Lancing Device
- 7 Lancets

1 Test Port

- Insert the GlucoDr Plus Test Strip for testing. Then the meter turns on and displays the code number automatically.

2 LCD Display

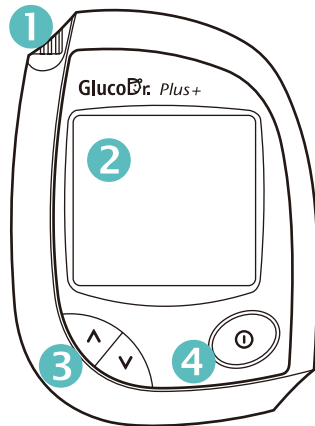
- Test results, icons, symbols and simple messages appear here.

3 UP/DOWN Button

- Change the code number in the CODE MODE.
- Recall the stored test result in the MEMORY MODE.
- Select an event in the EVENT RECORD MODE.
- Change the date and time in the SET MODE.

4 Power Button

- Turn the meter on/off.
- Enter into different MODEs while pressing the power button.
(1 second : CODE MODE, 3 seconds : SET MODE)
- Delete all the stored test results in the MEMORY MODE.





5 Data Port

- Transfer your test results from the meter to a computer.



6 Battery Cover

4 GlucoDr Plus™ Meter LCD Display

- 1 Battery life.
 - 2 SET MODE.
 - 3 AVERAGE MODE.
 - 4 MEMORY MODE.
 - 5 CODE MODE.
 - 6 MEMORY and CODE NUMBER.
- The meter displays the current memory order number in the MEMORY MODE.
The meter displays the current code number in the CODE MODE.

- 7 STRIP ICON.
When the STRIP ICON blinks, insert a test strip to the meter.
- 8 BLOOD DROP ICON.
When the BLOOD DROP ICON blinks, apply blood sample.
- 9 TEMPERATURE ICON.

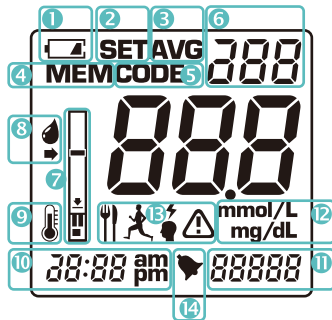
When the meter is not used at a recommended temperature range, "Er1" and TEMPERATURE ICON appear.

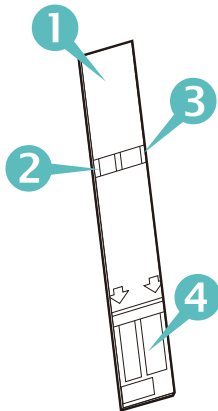
- 10 CURRENT TIME and TEST TIME in the MEMORY MODE.
- 11 CURRENT DATE and TEST DATE in the MEMORY MODE.
- 12 UNIT OF MESUREMENT.
- 13 EVENT ICON.

If you choose an event icon which correlates to test results, it helps to manage glucose level more effectively.

- 14 ALARM.

You can set up to four different alarms. Each alarm rings for 10 seconds.





- 1 Grip**
 - Hold this part to insert or remove test strip.
- 2 Yellow Side-edge**
 - Apply blood sample here; blood is absorbed automatically.
- 3 Confirmation window (Reaction chamber)**
 - Make sure the confirmation window fills completely.
- 4 Gold electrodes**
 - Insert into test port.

Checking the Code Number

Code numbers are used to calibrate your meter with the test strips for accurate test results. Whenever you test, you must check if the code number displayed on the meter matches the one on the test strip vial.



1

Turn on the Meter

Press the power button to turn on the meter. Then the code number, STRIP ICON and BLOOD DROP ICON will appear.



2

Check the Code Number

Make sure that the code number displayed on the meter matches the one on the test strip vial. If the code numbers match, you can begin the test. If they do not match, follow the next step.



3

Enter the CODE MODE

You can enter the CODE MODE by pressing the power button for one second. Then the code number blinks on the meter display.



CAUTION

- Check the code number on the test strip vial before inserting the test strip.
- You can not change the code number after the test strip is inserted into the test port.
- If you do not release the power button when the code number blinks, your meter will go to SET MODE.



4

Change the Code Number.

Use UP/DOWN button to adjust the same code number printed on your test strip vial.

**TIP**

- To change the code number faster, press and hold UP/DOWN button.

**5****Save the Code Number**

When the code number is correctly adjusted, press and release the power button. A new code number will be saved and appear on the meter display.

Control solution test is to check the performance of your meter and test strips. GlucoDr Plus Control Solution contains a measured amount of glucose that reacts with the GlucoDr Plus Test Strips.

The control solution test confirms that your meter and test strips are working correctly. Compare your control solution test results with the range printed on the test strip vial label. It is very important that you do this simple test routinely to make sure you get accurate test results.



INFORMATION

Check your system with the GlucoDr Plus Control Solution under the following situations.

- When you want to check the performance of the meter and test strip.
- When you leave your test strip vial cap open for a long time.
- When you open a new vial of test strips.
- When you think that the test results are not accurate.
- When you drop the meter.
- When you suspect your meter or test strips are not working properly.
- When your blood glucose test results are not consistent.



CAUTION

- Use only the GlucoDr Plus Control Solution for the test.
- Check the expiration date printed on the control solution vial. Do not use if the expiration date is past. Discard the control solution on the expiration date printed on the vial or three months after first opening whichever comes first. When you first open a new vial of the control solution, count three months forward and write the expected discarding date on the label of the control solution vial for your convenience.
- The control solution, meter, and test strips should be kept at a room temperature prior to the use.

! CAUTION

- Do not drink the control solution.
- Tightly close the cap of control solution vial and store at a room temperature after the test.



1

Insert a Test Strip

Insert a test strip, with the printed side facing up, into the test port of the meter. Gently push it all the way in until it goes no further.

The meter will turn on automatically and beep. Then the code number and the BLOOD DROP ICON will appear. Make sure that the code number displayed on the meter matches the one on the test strip vial. If the code numbers match, you can start the test. If the code number on the meter doesn't match the one on the test strip vial, adjust the code number on your meter. (see page 6-8)

**!** CAUTION

Do not force the test strip into your meter.
This may cause malfunction.



2

Apply Control Solution

Shake the control solution vial well. Prepare a drop of the control solution on a clean plate. Slowly let the side edge of the yellow window of the test strip touch the drop of the control solution following the finger symbol. Once the confirmation window fills completely, your meter will begin the countdown.



TIP

To ensure accurate test results

- Gently shake the control solution (vial) to ensure the control solution is mixed well before each test.
- Squeeze the vial to discard the first drop before the test.



3

Test Result Appears in 5 seconds

Your meter will display countdown from "5" to "1", then the test result will appear.



INFORMATION

Do not remove the test strip from your meter before you select the ATTENTION ICON in the EVENT RECORD MODE. If you remove the test strip before making the selection, you cannot save the test result marked as the control solution test. See page 21-22 for more details.



CAUTION

The Control Solution range printed on the test strip vial is for the GlucoDr Plus Control Solution only. It is used to check the performance of your meter and test strips. It is NOT a recommended range for your blood glucose level.



4

Compare Control Solution Test Results

Compare the control solution test result to the control solution range printed on the test strip vial. The test result should fall within this range. Each vial of test strips may have a different control solution range. If the test result you get is not within this range, the meter and test strips may not be working properly. Repeat the control solution test. Refer to the GlucoDr Plus Test Strip Instruction for the use.



INFORMATION

Out-of-range test results may be caused by one or more of the followings:

- Expired or contaminated control solution,
- Expired or damaged test strip,
- Use of control solution or test strip past its discarding date,
- Error in performing the test,
- Failure to shake the control solution vial well,
- Code number printed on the test strip vial does not match the one displayed on the meter,
- Meter, test strips or control solution are kept too warm or too cold,
- or Meter malfunction

! CAUTION

If your control solution test results continue to fall outside the range printed on the test strip vial, the GlucoDr Plus Blood Glucose Monitoring System may not be working properly.

- If this is the case, do not use the system to test your blood glucose levels.
- Contact your local distributor.

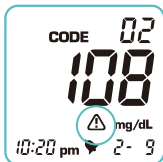


5

Record the Control Solution Test Results in the Meter

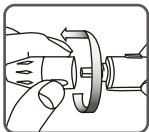
To record the control solution test results, press any of UP/DOWN button of the meter to select ATTENTION ICON. Press and release the power button if selection is completed. The control solution test results will be saved.

🔍 INFORMATION



Record all the control solution test results with ATTENTION ICON '⚠️' to distinguish them from those of actual blood glucose tests in the meter memory. Recorded control solution test results will not be calculated in your result averages.

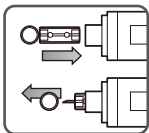
Preparing the Lancing Device



1

Remove the cap

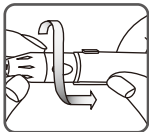
Turn the cap of the lancing device counter-clockwise to remove the cap.



2

Insert a Lancet into the Lancet Holder.

Insert the lancet firmly into the holder until it comes to a full stop. When the lancet is placed in the lancing device, twist off the protective disk of the lancet. Do not discard the protective disk of the lancet; it will be used to dispose the lancet safely after its use.



3

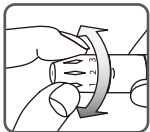
Replace the cap

Turn the cap of lancing device clockwise until it fits.



CAUTION

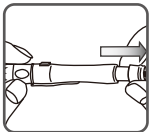
- Before using the lancing device, wash your hands in warm water with soap. Make sure to rinse and dry them thoroughly. Perspiration, dirt or water remaining on your hands may cause incorrect test results.
- Avoid using hand lotion or any other oily products before using the lancing device.



4

Adjust the Puncture Depth Setting

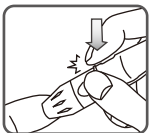
The dial for setting the puncture depth is at the tip of the lancing device. Higher number indicates deeper puncture. Thus, dial to the lower number for thin skin.



5

Charge the Lancing Device.

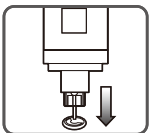
Draw back the end part of lancing device until it clicks, and then release it.



6

Lance your Finger

Place the lancing device carefully on the tip of your finger and press the release button.



7

Remove the Used Lancet

Place the protective disk on a flat surface. With the used lancet still in the lancing device, push the lancet needle completely into the protective disk. Push the lancet ejector forward with your thumb and simultaneously pull out the sliding barrel to dispose the used lancet in a proper bio-hazardous container.



CAUTION

- To reduce the risk of infection, never share a lancet with another person.
- Lancets are for single use only. Always use a new sterile lancet.
- Used strips, lancets and meter may be considered bio-hazardous waste in your area. Make sure to follow your healthcare professional's recommendations or local regulations for proper disposal.



Lancing Device Manufactured by

CE

GMMC

1112, 130, Digital-ro, Geumcheon-gu,
Seoul, Korea



Lancet Manufactured by

CE₁₃₇₀

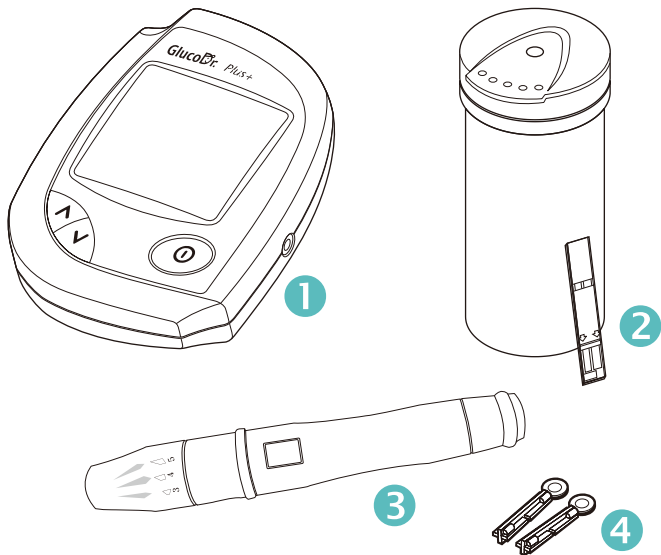
SAEHANMED CORP.

Na-dong, Ga-dong, 331 Seongseok-ro,
Ilsandong-gu, Goyang-si, Gyeonggi-do, Korea

RECOMMENDED AVAILABLE LANCETS

Some general sterilized lancets are BD-Ultra Fine, E-Z Ject, G-P Lite, Microlet, Monolet, Soft Touch, Ultra TLC, Unilet GP and Greenlan.

Note: Not recommended lancets in the above list may not work properly with the lancing device due to their dimensions. Please contact your supplier to make sure you are using proper lancets.



- 1 GlucoDr Plus™ Meter
- 2 GlucoDr Plus™ Test Strip
- 3 Lancing Device
- 4 Lancets



1

Insert a Test Strip

Insert a test strip, with the printed side facing up, into the test port of the meter. Push it all the way in until it goes no further. The meter will turn on automatically and beep. Then the code number and the BLOOD DROP ICON will appear. Make sure the code number displayed on your meter and the test strip code number match.



CAUTION

Do not force the test strip into the meter.
This may cause malfunction of the meter.

2

Obtain a Blood Drop

Obtain a blood drop from your fingertip using the lancing device (see page 14-16) The blood sample must be at least 1.5 micro liters in volume [actual size ●].



TIP



Before puncturing, gently massage the fingertip to obtain a round drop of blood.
Do not smear the blood sample.

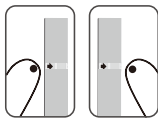


3

Apply the Blood Sample

Apply the round drop of blood to the side edge of the yellow window of the test strip and then blood drop will be absorbed into the narrow channel. Touch and hold the blood drop to the side edge of the yellow window of test strip until blood completely fills the confirmation window and the meter beeps. Then, your meter will start the countdown.

! CAUTION



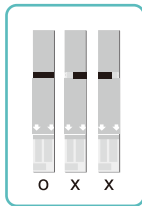
0

X

You should apply blood to the arrow on the test strip as directed.

- Do not put blood on the top of the test strip
- Apply the blood drop to the side edge of the yellow window of the test strip.

! CAUTION



0

X

X

- If there is an insufficient amount of blood in confirmation window, you may get inaccurate test result. See the picture in the left for proper application of the required blood volume to perform the test properly.

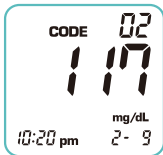
- Even if the meter begins the countdown despite the fact that the confirmation window is not completely filled, do not apply more blood to the test strip. Discard the test strip and repeat the test with a new test strip.



4

Test Results Appear in 5 seconds

Once the meter completes the countdown from “5” to “1”, your test result will appear on the meter display. If you remove the test strip immediately, only the test result (without recording the event) will be automatically saved in the meter memory. Recording the event with each test result may help with effective diabetes management. To enter the EVENT RECORD MODE, you may press UP/DOWN button of the meter before removing the test strip from the meter (See pages 21-22 for more details).



INFORMATION

If you do not apply a blood drop within 3 minutes, your meter will turn off automatically. Once the meter turns off, remove the test strip and then insert it back into your meter to turn on the meter.



TIP

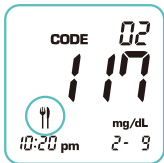
After the test, press any of UP/DOWN button in the EVENT RECORD MODE before removing the test strip from your meter. Recording your condition will lead you to more effective diabetes management.

For effective diabetes management, stored test results with your condition will help you and your healthcare professional to track changes in your blood glucose level.

**1**

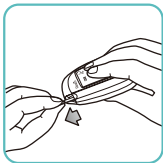
Press UP/DOWN Button After the Test

Press UP/DOWN button after the test. Once the test result appears on the meter display, press any of UP/DOWN button to enter the EVENT RECORD MODE.

**2**

Select the EVENT ICON

There are 4 different EVENT ICONS: Meal, Exercise, Stress and Attention. Press UP/DOWN button to select an icon which correlates with the test result.

**3**

Remove the Test Strip

After the selection of an EVENT ICON, remove the used test strip. After discharging the used test strip, the test result with the EVENT ICON will be saved in the meter memory automatically.



CAUTION

Once you remove the test strip from the meter, you cannot go back to the EVENT RECORD MODE. Do not remove the test strip from the meter until selecting an EVENT ICON is completed.



MEAL ICON

Select this icon when you have a test after meal (food intake).



STRESS ICON

Select this icon when you have a test during stress or ill.



EXCERCISE ICON

Select this icon when you have a test after exercise.



ATTENTION ICON

Select this icon in performing control solution tests or improper blood glucose test. Record all control solution tests with ATTENTION ICON to distinguish them from blood glucose tests in the meter memory. Recorded control solution test results will not be calculated in your result averages.

The GlucoDr Plus Meter will display test result between 20 and 900 mg/dL (1.1~50 mmol/L). If your test result is lower than 20 mg/dL (1.1 mmol/L), "Lo" will appear on the meter display. If your test result is higher than 900 mg/dL (50 mmol/L), "HI" will appear on the meter display.

! CAUTION



- If "HI" or "Lo" appears instead of a test result, retest your blood glucose level immediately with a new test strip. If the same message appears, check the system with the GlucoDr Plus Control Solution. If your meter and test strip are working correctly, you must contact your healthcare professional immediately.

Expected Values¹

Criteria for the diagnosis of non-diabetes

Fasting plasma glucose (FPG) 70 ~ 100 mg/dL (3.9 ~ 5.6 mmol/L)

Two hours after meals plasma glucose < 140 mg/dL (7.8 mmol/L)

Criteria for the diagnosis of diabetes

Fasting plasma glucose (FPG) >126 mg/dL (7.0 mmol/L)

Two hours after meals plasma glucose >200 mg/dL (11.1 mmol/L)

Categories of increased risk for diabetes (prediabetes)

Fasting plasma glucose (FPG) 100 ~ 125 mg/dL (5.6 ~ 6.9 mmol/L)

Two hours after meals plasma glucose 140 ~ 199 mg/dL (7.8 ~11.0 mmol/L)

Reference

1. American Diabetes Association: Clinical Practice Recommendations(2013) Diabetes Care, Vol 36, Supplement 1, p. S1-S100.

Recalling the Previous Test Results

The GlucoDr Plus Meter has a memory capacity to store up to 250 most recent test results with date, time and event. It also provides you averages of your blood glucose test results over a period of time (1~28d). You can review the test results stored in the memory by the following steps.

**1**

Press UP/DOWN Button

To enter the MEMORY MODE, press UP/DOWN button with the meter turned on.



INFORMATION

If there is no test result, the meter will not display anything and UP/DOWN button will not operate.



AVG 7d
96
mg/dL

2

Indicate the Average Value

You can select the number of days for the average (1~28d) in the SET MODE. "7d" shown in the left side indicates that the value 96 is a calculated average for the past 7 days.



INFORMATION

When the whole test results' average is calculated, individual event records are not considered. The GlucoDr Plus Blood Glucose Monitoring System will use 900 mg/dL (50 mmol/L) for "HI" results, and 20 mg/dL (1.1 mmol/L) for "Lo" results.



3

Recall your Test Results

Press and release UP/DOWN button once to make the most recent test result appear on the meter display. Every time you press and release UP/DOWN button, the meter will display the next result up to 250 test results.



TIP

Press and hold UP/DOWN button in the MEMORY MODE in order to view the test results faster.



INFORMATION

MEM

dEL

To delete all the stored test results in the MEMORY MODE, press and hold the power button for 5 seconds until "dEL" flashes 3 times. You can not delete any test result separately.



4

Exit the MEMORY MODE

Press and release the power button once to exit from the MEMORY MODE.

The GlucoDr Plus Meter comes with the time, date, alarm(0), average day(7d) and unit of measurement presents (mg/dL) preset. However, if you need to change the setting of the meter, or if you replace the battery, you need to enter the SET MODE and reset them. It is important to set the correct time and date. Having the correct time and date of each blood glucose test result will help you and your healthcare professional to track changes in your blood glucose level.



INFORMATION

After replacing the battery, you should update the time and date setting.



1

Press and Hold the Power Button for 3 seconds

With the meter turned on, press and hold the power button until "SET" appears on the meter. Release the power button to enter the SET MODE. The Year flashes.



INFORMATION

To exit the SET MODE at any time, press and hold the power button for 3 seconds. The settings you have already made will be saved.

SET

2

Set the Year

Press and release UP/DOWN button to adjust the year until the correct year appears on the meter display. If you press and release the power button in the SET MODE, the meter will advance to the Hour Setting.

20 14



TIP

Press and release the power button in order to advance to the next setting steps in the SET MODE. Press and release UP/DOWN button to adjust the number in the SET MODE. To move faster, press and hold UP/DOWN button.

SET

3:40 pm

3

Set the Hour

The Hour flashes. Press and release UP/DOWN button until you get the correct hour. If you press and release the power button, the meter will save hour and advance to the Minutes Setting.

SET

3:40 pm

4

Set the Minutes

The Minutes flash. Press and release UP/DOWN button until you get correct minute. If you press and release power button, the meter will advance to the Time Format Setting.

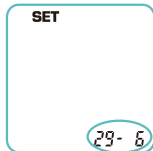
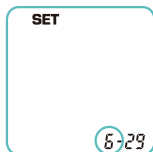
SET

15:40

5

Set the Time Format

The time flashes. Press and release UP/DOWN button to adjust until you get the correct time format. If you press and release the power button, the meter will advance to the Month Setting.



6

Set the Month

The Month flashes. Press and release UP/DOWN button until you get the correct month. If you press and release the power button, the meter will advance to the Day Setting.

7

Set the Day

The Day flashes. Press and release UP/DOWN button until you get the correct day. If you press and release the power button, the meter will advance to the Date Format Setting.

8

Set the Date Format

The Date flashes. Press and release UP/DOWN button until you get the date format that you want. If you press and release the power button, the meter will advance to the Unit of Measurement Setting.

9

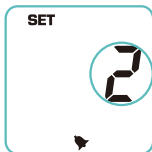
Set the Unit of Measurement

The Unit of Measurement (mg/dL or mmol/L) flashes. Press and release UP/DOWN button until you get the unit measurement that you want. If you press and release power button, the meter will advance to the Average Period Setting.



10 Set the Average Period

The Average Period flashes. Press and release UP/DOWN button until you get the period of average setting that you want (1~28d). If you press and release the power button, the meter will advance to the Alarm Setting.



11 Set the Alarm (up to 4 different Alarms a day)

The Alarm times flash. Press and release UP/DOWN button until you get the alarm times (0 to 4th) setting that you want. If you press and release the power button, the meter will advance to the Alarm Time Setting.



12 Set the Alarm Time

The setting for the Alarm Time Setting will start flashing. Press and release UP/DOWN button until you get the time that you want. The Hour of the Alarm Time flashes. Press and release UP/DOWN button to set the alarm time the same as the Time Setting(③-④).




13 Save the Setting Information

Press and release the power button, and then the meter will turn off. The setting information you entered will be saved.

**TIP**

Totally four different alarms can be set. You can continually set alarm right after the first setting. Press and release the power button after you complete the first alarm time setting. Then "2" appears, you can repeat to set the next alarm time.

Two AAA batteries will provide you enough power to perform about 5,000 tests. The meter will alert you when the energy level is getting low by displaying the message (). In this case you can test a few more times but the battery should be replaced to new one as soon as possible. If "bAt" appears on the meter display, the meter will not operate. The battery must be immediately replaced.

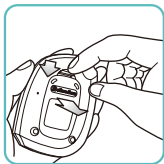
CAUTION

- Always turn off your meter before replacing the batteries. Replacing the batteries with the meter power on may lead to malfunction of the meter.
- When replacing new batteries, make sure to use only AAA batteries and replace two batteries at once.

**1**

Turn off the Meter.

Press the power button to turn off the meter.



2

Remove the Battery Cover

Press down the top of the battery cover then pull it out. The battery cover will be released.



3

Replace the Battery

Remove the old battery and put the new one.

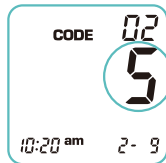
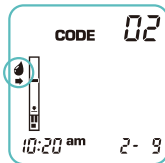
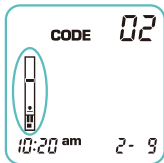
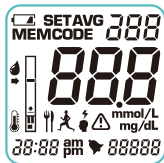


4

Close the Battery Cover

Insert the battery cover tab into the matching hole on the meter, and push down until you hear the cover click into place.

Message



What it means.

System check. This display always appears when you press the power button to turn on the meter.

The meter is ready for you to insert a test strip.

The meter is ready for a blood drop or control solution.

The meter displays countdown from 5 to 1, while calculating a blood glucose test result.

Action

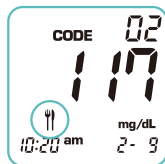
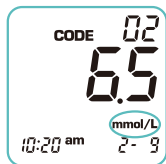
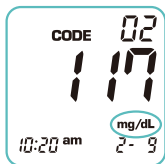
You should check that your meter matches the example exactly every time your meter turns on. Do not use the meter if the display check screen does not exactly match the example. Please contact your local distributor.

Insert a test strip into the test port of your meter. Make sure the code number displayed on the meter matches the one on the test strip vial.

Apply a blood sample to the test strip. (See pages 17-20 for how to test your blood glucose level)

No action is required.

Message



What it means.

A blood glucose test result in mg/dL.

A blood glucose test result in mmol/L.

System is ready to record the EVENT ICON which correlate with your test result.

Your blood glucose result is higher than 900 mg/dL (50 mmol/L).

Action

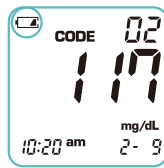
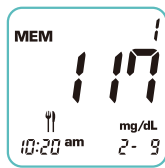
No action is required.

No action is required.

Select an EVENT ICONS using UP/DOWN button before discarding the used test strip.

Repeat the test using a new test strip and/or check the system with the GlucoDr Plus Control Solution. If the test result is "HI" again even though your system is working correctly, contact your healthcare professional immediately.

Message



What it means.

Your blood glucose result is lower than 20 mg/dL (1.1 mmol/L).

A blood glucose test result stored in the memory.

Battery is low but you can still perform a few more tests.

The energy level of the battery is too low to provide accurate test results.

Action

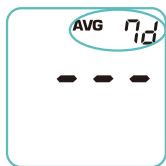
Repeat the test using a new test strip and/or check the system with the GlucoDr Plus Control Solution. If the test result is "Lo" again even though your system is working correctly, contact your healthcare professional immediately.

No action is required.

Turn off the meter and replace the battery as soon as possible.

Turn off the meter and replace the battery immediately.

Message



What it means.

The average of blood glucose test results for the past 7 days.

No test result in memory.

The meter is used outside the proper range of temperature.

The used test strip was inserted in the test port.

Action

No action is required.

No action is required.

Leave the meter at a temperature between 10~40°C (50~104°F) for at least 30 minutes before repeating the test.

Retest with a new test strip.

Message

Er-3

Er-4

Er-5

Er-6

What it means.

There may be a problem with the test strip. It may have been damaged or removed during testing.

The blood sample or control solution was improperly applied or there was an electrical noise during the test.

The meter has an internal electric circuit problem.

The meter has a problem with strip connection.

Action

Retest with a new test strip. Do not remove the test strip until test result appears on the meter display.

Retest with a new test strip.

Contact your local distributor.

Contact your local distributor.

Troubleshooting	Cause	Action
1. The meter does not turn on after inserting a test strip.	Batteries are dead.	Replace the batteries.
	The batteries are installed incorrectly or there is no battery in the meter.	Check if batteries are correctly installed.(See pages 31-32)
	The test strip is inserted upside down or incompletely.	Insert the test strip correctly with the printed side facing up.
	The meter may not be working properly.	Contact your local distributor.
2. The meter does not start after applying the blood sample.	Not enough blood sample.	Retest with a new test strip.
	The test strip may be damaged.	Retest with a new test strip.
	Blood sample is applied after the meter was automatically turned off (3 minutes after last action).	Retest with a new test strip.
	The meter may not be working properly.	Contact your local distributor.

Product Name	GlucoDr Plus™ Blood Glucose Monitoring System
Model Name	AGM-3000
Assay Method	Electrochemical method
Sample Type	Fresh capillary, venous, and arterial whole blood
Sample Volume	Minimum 1.5 μ l
Measurement Range	20~900 mg/dL (1.1~50 mmol/L)
Measurement Time	5 seconds
Calibration	Plasma-equivalent
Battery Type	Two AAA batteries DC 3V
Battery Life	Approximately 5,000 tests
Unit of Measurement	mg/dL or mmol/L
Operating Ranges	Temperature: 10~40 °C (50~104 °F) Relative Humidity: Less than 85% Altitude: Up to 2500m (8202 feet) Hematocrit: 20~60%
Dimension	64.0 X 87.0 X 25.0 (mm), 2.5 X 3.4 X 0.98 (inches)
Weight	Approximately 80g or 2.8 oz. (with battery)
Display	41.0 X 41.5 (mm) LCD, 1.6 X 1.6 (inches) LCD
Memory Capacity	250 test results (with date, time & event)
PC Interface	USB
Automatic Shutoff	3 minutes after last action

- The performance of the GlucoDr Plus Test Strips has been evaluated in clinical tests.
Accuracy:
- The accuracy of the GlucoDr Plus Blood Glucose Monitoring System was assessed by comparing blood glucose test results obtained from 100 diabetic patients with those obtained using YSI Model 2300 STAT Plus Glucose Analyzer.

For glucose concentration < 75 mg/dL (4.2 mmol/L)			For glucose concentration ≥ 75 mg/dL (4.2 mmol/L)		
Accuracy Range	% of result		Accuracy Range	% of result	
Within ±5 mg/dL (0.28 mmol/L)	69		Within ±5%	66	
Within ±10 mg/dL (0.56 mmol/L)	96		Within ±10%	98	
Within ±15 mg/dL (0.83 mmol/L)	100		Within ±15%	100	
			Within ±20%	100	
Repeatability (using venous whole blood):			Repeatability (using control):		
Level	SD	CV	Level	SD	CV
14.8 mg/dL	2.6 mg/dL	7.6%	32.1 mg/dL	2.1 mg/dL	5.9%
101 mg/dL	2.5 mg/dL	2.5%	123 mg/dL	3.3 mg/dL	2.6%
145 mg/dL	3.2 mg/dL	2.3%	280 mg/dL	5.7 mg/dL	1.7%
198 mg/dL	5.4 mg/dL	2.9%			
326 mg/dL	8.0 mg/dL	2.4%			



CAUTION



This product fulfills the requirements of Directive 98/79/EC on in vitro diagnostic medical device.



For in vitro diagnostic use



Do not dispose the instrument in the urban waste.



Consult User Manual

